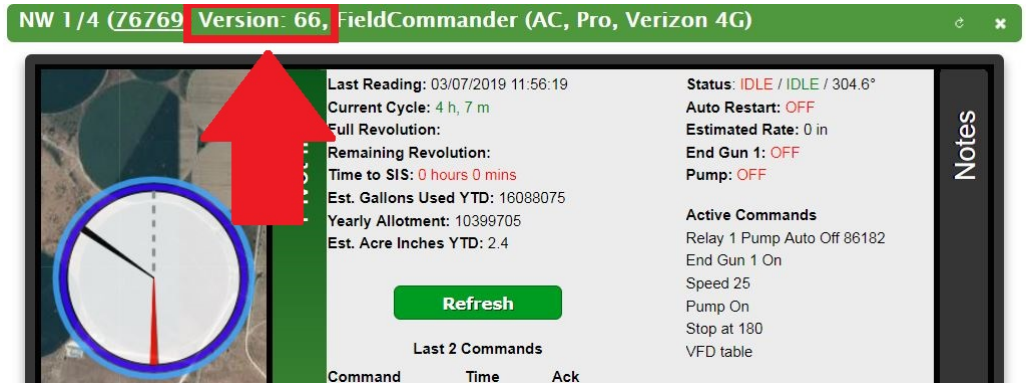
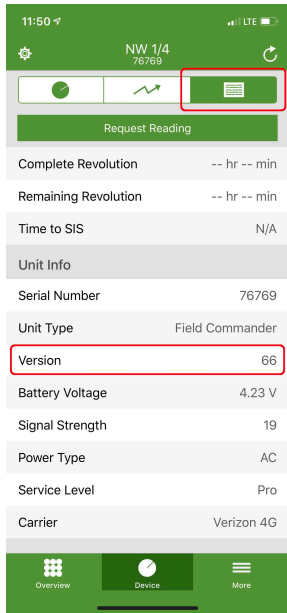
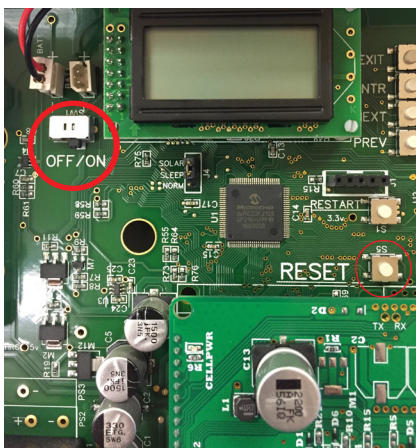




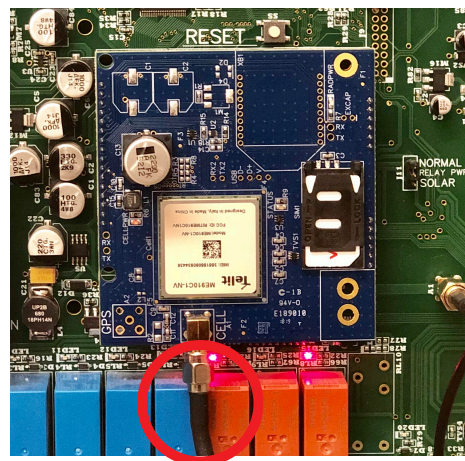
Guide to Installing a Telit 4G LTE Modem



1. AgSense devices require a minimum firmware version of 66 for the new Telit 4G modem/d-card to be compatible. If the firmware is less than 66, an update is required before continuing to the next step. Please call AgSense at 605-352-8350 with the device serial number. The device must have power and be communicating for the update to download. The firmware is visible on the AgSense App in the 'Pivot Info Tab' and on the web on the 'Pivot Info' Screen.



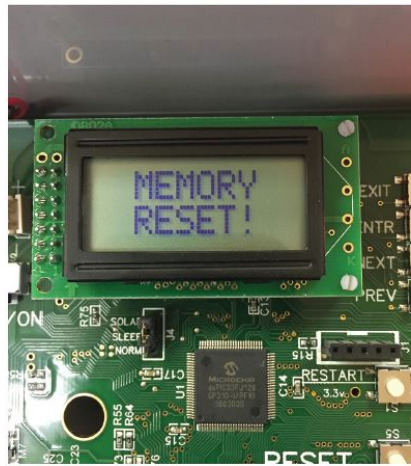
2. Turn the Power Switch to the 'Off' Position.



3. Disconnect the cellular antenna from the d-card. Remove the existing d-card by gently wiggling it until it slides off the pins.
4. Install the new Telit d-card by carefully lining up the pins and firmly pressing the d-card onto the board. Reconnect the cellular antenna.

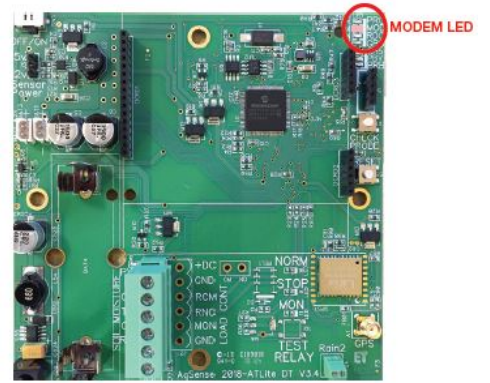
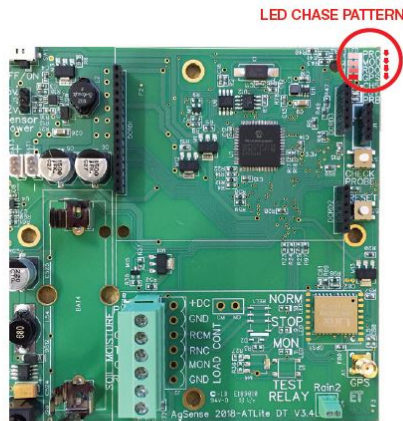
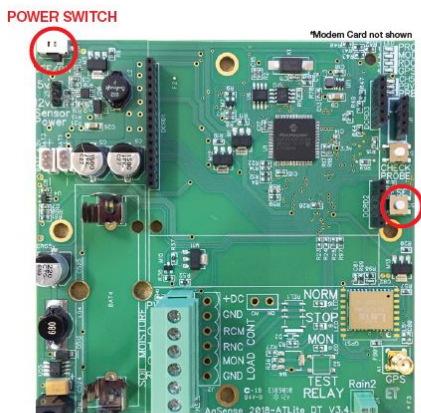
Continued on next page

Device With LCD Screen (Crop Link Shown)

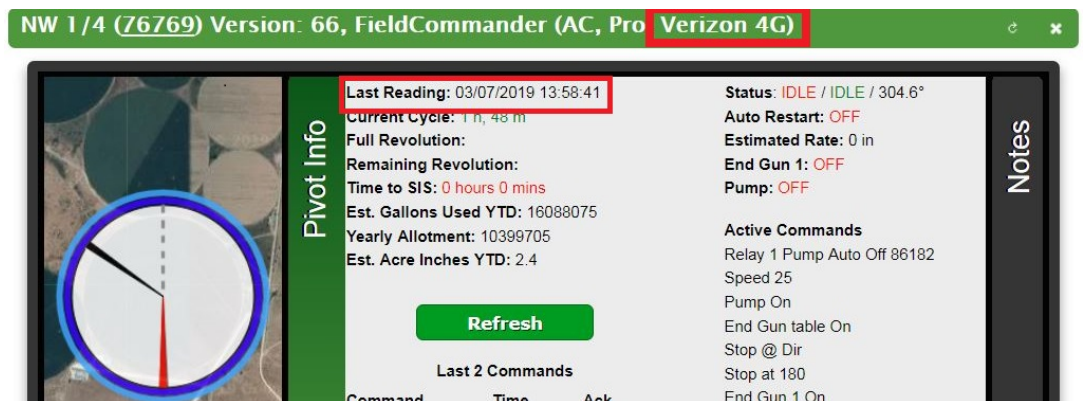
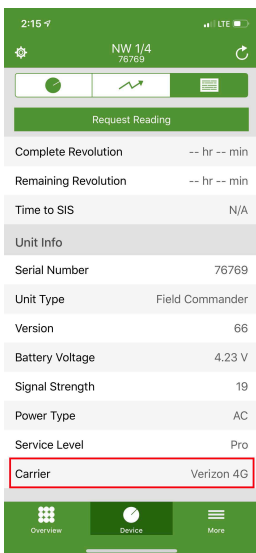


5. Hold in the RESET button while turning on the Power Switch. (see red circled areas)
6. Make sure the LCD Screen shows MEMORY RESET.
7. Wait for the unit to do its self-checks, and finally say CropLink (or appropriate device) INSTALL.

Device Without LCD Screen (Aqua Trac Lite Shown)



5. Hold in the RESET button while turning on the Power Switch. (see red circled areas)
6. Make sure the 4 circled LED's perform a sequential chase pattern (if they do not, repeat Step 3).
7. After a few minutes, the unit should connect to AgSense and the Modem LED will switch from blinking to be on SOLID RED (not blinking). This means the unit was able to connect, and was able to send/receive data correctly.



8. Verify the last reading is accurate. The modem type should now show Verizon 4G on the AgSense app and website.